

This PDB distributes power from a 3~6S LiPo pack to 4 ESCs, as well as providing regulated & filtered DC 5V & DC 10V outputs for powering Cameras, RC receiver, Flight Controllers, Video Transmitters, LEDs, etc. It also has built-in 184A current Sensor, and offers a XT60PW socket to connect the LiPo pack conveniently.

### Features

- Total 4 pairs ESC solder tabs are fit for X type frame
- Built-in XT60PW Socket
- Max.27V input w/ TVS protection
- Built-in current sensor 184A
- PDB: 4\*30A (4\*46A, 5 seconds), 4layers\*2oz copper PCB
- BEC 5V/1.5A(2A Max) w/ 100uF panasonic POSCAP filter
- BEC 10V/1.5A(2A Max.) w/ 47uF TDK MLCC filter
- 5V & 10V Output LED indicators & Short circuit tolerant

### Specifications

Current Module

- Max.range 184A
- 3.3V ADC
- Scale the output voltage to milliamps(1/10th mV/A): 179

BEC 5V output:

- Designed for RC Receivers, Flight controllers, OSD, and Servos.
- DC/DC synchronous buck regulator.
- Voltage: 5.0 +/- 0.1VDC
- Continuous current: 1.5 Amps (Max.2.0A 10s/minute)
- Short-circuit tolerant (2 seconds/minute)

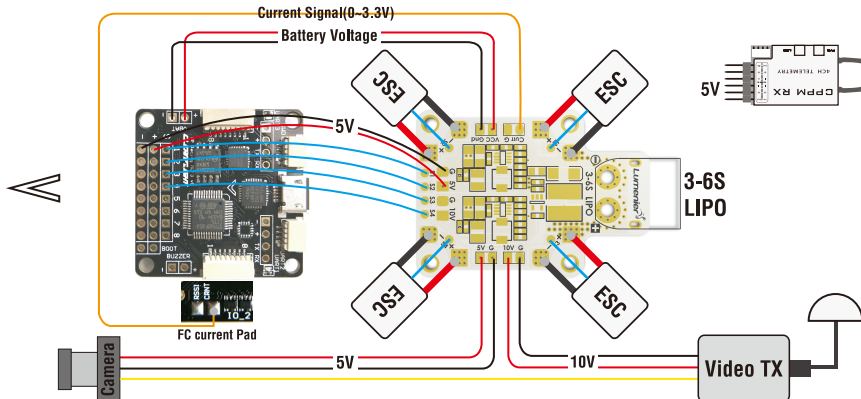
BEC 10V output:

- Designed for Video TX or FPV camera.
- Voltage: 10.0 +/- 0.2VDC
- Continuous current: 1.5 Amps (Max.2.0A 10s/minute)
- Short-circuit tolerant (2 seconds/minute)
- 10V can be used to power cameras labeled as 12V
- The 3S LiPo input voltage should be 11V plus

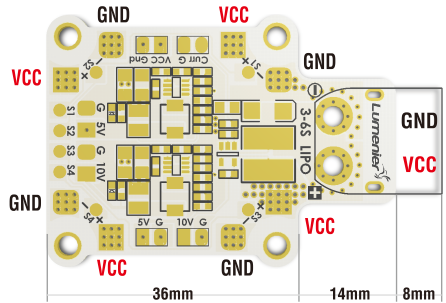
Physical:

- Mounting: 30.5 x 30.5mm, Φ3mm
- Dimensions: 36 x 50 x 4 mm (w/o XT60PW), 36 x 58 X10.5mm (w/ XT60PW)
- Weight: 8.5g(w/o XT60PW), 13g(w/ XT60PW)

### Connections



### Layout



VCC=Battery Voltage